

# Inserm Workshop 269

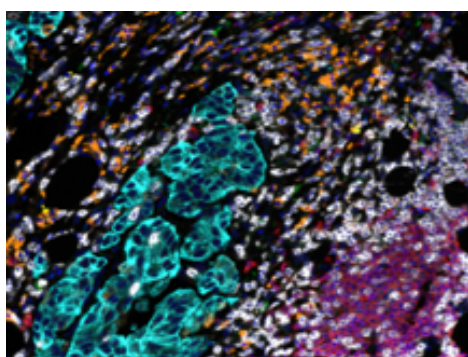
## Methods for the study and analysis of in situ cellular interactions by highly multiparametric imaging



**REGISTRATION DEADLINE: July 22, 2022**

**ORGANIZERS:** Nathalie BONNEFOY (Institut de Recherche en Cancérologie de Montpellier, FRA), Bertrand DUBOIS (Centre de Recherche en Cancérologie de Lyon, FRA), Henri-Alexandre MICHAUD (Institut de Recherche en Cancérologie de Montpellier, FRA)

**AIMS:** The aim of this workshop is to review the state of the art of medium and high multiparametric imaging approaches and to present analysis strategies for studying the heterogeneity of cellular networks in situ.



### PHASE I – CRITICAL ASSESSMENT

October, 3-5 2022

#### IMMUNOFLUORESCENCE IMAGING

Nicolas GADOT (Centre Léon Bérard, Lyon, FRA), Fabienne ANJUERE (IPMC, Nice, FRA), Wendy J. FANTL (Stanford University, USA)

#### IMAGING MASS CYTOMETRY

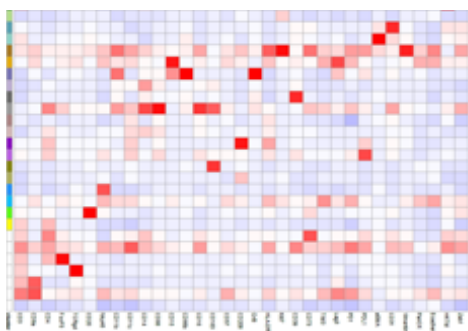
Patrice HEMON (Laboratoire LBAI, Brest, FRA), Shruti DESAI (Yale School of Medicine, New Haven, USA), Gregory HAMM (AstraZeneca, Cambridge, UK), Brice GAUDILLERE (Stanford University, USA)

#### SPATIAL TRANSCRIPTOMIC

Pierre BOST (University of Zurich, Switzerland), Marco MENDOZA (Genoscope CEA, Evry, FRA), Karen LEROY (Institut Cochin, Paris, FRA), Nina RADOSEVIC (Biodiagnostics Laboratory OncoGenAuvergne, Clermont-Ferrand, FRA), Maxime MEYLAN (Centre de Recherche des Cordeliers, Paris, FRA)

#### DATA ANALYSIS

Denis SHAPIRO (Heldeberg University, GER), Marco MENDOZA (Genoscope CEA, Evry, FRA), Thomas HÖLLT (Delft University of Technology, The Netherlands), Laure-Agnes CHEPEAUX (IRCM, Montpellier, FRA), Yvonne SCULLER (Laboratoire LBAI, Brest, FRA)



### PHASE II – TECHNICAL WORKSHOP

October 17th – 20th, 2022

Hands-on experiments to apply main fundamental aspects developed during Phase I of the workshop. Two different training are proposed together with dedicated bio-informatics tools for data analysis:

- Imaging Mass Cytometry (IRCM, Montpellier)
- MultiSpectrale Imaging (CRCL, Lyon) to analyze immune microenvironment.

**SELECTION:** 6 pair of trainees for each workshop (12 trainees for Montpellier, 12 trainees for Lyon)

Information and registration  
ateliers@inserm.fr  
<https://site.ateliers-inserm.fr>